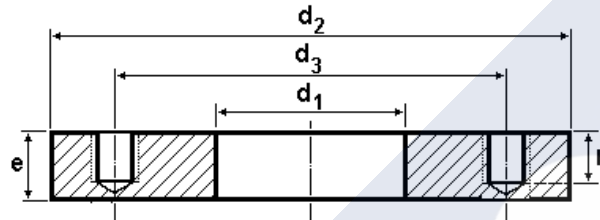


**SUPLEMENTOS NORMA NAE**



**SUPLEMENTO SENCILLO**

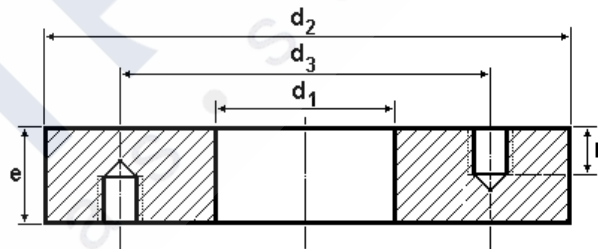
Material: St 37.2  
Norma: NAE 44.63116



DN	d <sub>2</sub>	d <sub>1</sub>	e	N° Taladros	Rosc. Taladros	d <sub>3</sub>	h	Peso
1/2"	95	22	17	4	M-12	65	17	0,85
3/4"	105	28	17	4	M-12	75	17	1,02
1"	115	35	17	4	M-12	85	17	1,20
1 1/4"	140	44	22	4	M-16	100	22	2,27
1 1/2"	150	50	22	4	M-16	110	22	2,59
2"	165	62	22	4	M-16	125	22	3,04
2 1/2"	185	78	22	4	M-16	145	22	3,69
3"	200	90	22	8	M-16	160	22	4,08
4"	220	116	22	8	M-16	180	22	4,47
5"	250	142	22	8	M-16	210	22	5,50
6"	285	171	26	8	M-20	240	26	7,90
8"	340	222	26	8	M-20	295	26	10,20

**SUPLEMENTO DOBLE**

Material: St 37.2  
Norma: NAE 44.65116



DN	d <sub>2</sub>	d <sub>1</sub>	e	N° Taladros	Rosc. Taladros	d <sub>3</sub>	h	Peso
1/2"	95	22	18,7	4	M-12	65	17	1,05
3/4"	105	28	18,7	4	M-12	75	17	1,20
1"	115	35	18,7	4	M-12	85	17	1,32
1 1/4"	140	44	24,2	4	M-16	100	22	2,48
1 1/2"	150	50	24,2	4	M-16	110	22	2,83
2"	165	62	24,2	4	M-16	125	22	3,34
2 1/2"	185	78	24,2	4	M-16	145	22	4,05
3"	200	90	24,2	8	M-16	160	22	4,45
4"	220	116	24,2	8	M-16	180	22	4,91
5"	250	142	24,2	8	M-16	210	22	6,01
6"	285	171	28,6	8	M-20	240	26	8,60
8"	340	222	28,6	8	M-20	295	26	11,0