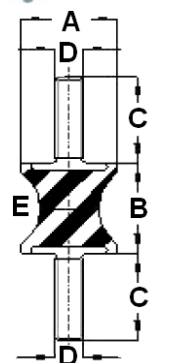
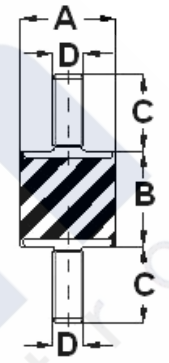


SUSPENSIÓN ELÁSTICA SERIE SR

Ref.	A	Dureza (Sh)	B	C	D	Compresión (Kgs.)	Flecha	Cizalla (Kgs.)	Flecha
SR 000	12	60	15	10	M-05	15	3,0±0,5	1,5	2,0±0,5
SR 1610	16	60	10	12	M-05	20	1,5±0,5	2,0	2,0±0,5
SR 1615	16	60	15	12	M-05	15	2,5±0,5	2,0	3,0±0,5
SR 1620	16	60	20	12	M-05	15	3,5±0,5	2,0	4,0±0,5
SR 1625	16	60	25	12	M-05	15	4,5±1,0	2,0	5,0±1,0
SR 2008	20	60	08	15	M-06	45	1,0±0,3	4,5	1,5±0,3
SR 2015	20	60	15	15	M-06	35	3,0±0,5	3,5	3,0±0,5
SR 2020	20	60	20	15	M-06	25	4,0±1,0	2,5	4,0±0,5
SR 2025	20	60	25	15	M-06	25	5,0±1,0	2,5	5,0±1,0
SR 2030	20	60	30	15	M-06	25	6,0±1,0	2,5	6,0±1,0
SR 2510	25	50	10	20	M-08	80	2,0±0,5	8,0	2,0±0,5
SR 2515	25	50	15	20	M-08	60	3,0±0,5	8,0	3,0±0,5
SR 2520	25	50	20	20	M-08	45	4,0±0,5	8,0	4,0±0,5
SR 2525	25	50	25	20	M-08	40	5,0±1,0	6,0	5,0±1,0
SR 2530	25	50	30	20	M-08	40	6,0±1,0	5,0	6,0±1,0
SR 2540	25	50	40	20	M-08	40	8,0±1,0	5,0	8,0±1,0
SR 00	28	50	22	20	M-08	60	5,0±1,0	11,0	5,0±1,0
SR 3010	30	50	10	20	M-08	80	2,0±0,5	11,0	2,0±0,5
SR 3015	30	50	15	20	M-08	80	3,0±0,5	11,0	3,0±0,5
SR 3020	30	50	20	20	M-08	80	4,0±0,5	11,0	4,0±0,5
SR 3030	30	50	30	20	M-08	60	6,0±1,0	11,0	6,0±1,0
SR 3040	30	50	40	20	M-08	60	8,0±1,0	11,0	8,0±1,0
SR 0 M8	40	50	28	20	M-08	100	5,5±1,0	16,0	5,5±1,0
SR 4020	40	50	20	25	M-10	160	4,0±0,5	20,0	4,0±0,5
SR 4028	40	50	28	25	M-10	100	5,5±1,0	16,0	5,5±1,0
SR 4035	40	50	35	25	M-10	100	7,0±1,0	16,0	7,0±1,0
SR 4040	40	50	40	25	M-10	100	8,0±1,0	16,0	8,0±1,0
SR 4045	40	50	45	25	M-10	100	9,0±1,0	16,0	9,0±1,0
SR 5020	50	50	20	25	M-10	300	4,0±0,5	25,0	4,0±0,5
SR 5025	50	50	25	25	M-10	175	5,0±1,0	25,0	5,0±1,0
SR 5030	50	50	30	25	M-10	160	6,0±1,0	25,0	6,0±1,0
SR 5035	50	50	35	25	M-10	160	7,0±1,0	25,0	7,0±1,0
SR 5040	50	50	40	25	M-10	155	8,0±1,0	25,0	8,0±1,0
SR 5045	50	50	45	25	M-10	150	9,0±1,0	25,0	9,0±1,0
SR 5060	50	50	60	25	M-10	130	12,0±1,5	25,0	12,0±1,5
SR 6025	60	50	25	25	M-10	400	5,0±1,0	35,0	5,0±1,0
SR 6035	60	50	35	25	M-10	300	7,0±1,0	35,0	7,0±1,0
SR 6045	60	50	45	25	M-10	250	9,0±1,0	35,0	9,0±1,0
SR 6060	60	50	60	25	M-10	225	12,0±1,5	35,0	12,0±1,5
SR 7035	70	50	35	33	M-12	450	7,0±1,0	55,0	7,0±1,0
SR 7035 M10	70	50	35	25	M-10	450	7,0±1,0	55,0	7,0±1,0
SR 7050	70	50	50	33	M-12	300	10,0±1,0	35,0	10,0±1,0
SR 7050 M10	70	50	50	25	M-10	300	10,0±1,0	35,0	10,0±1,0
SR 7070	70	50	70	35	M-12	300	14,0±1,5	35,0	14,0±1,5
SR 7070 M10	70	50	70	25	M-10	300	14,0±1,5	35,0	14,0±1,5
SR 8030	80	50	30	35	M-14	950	6,0±1,0	100,0	6,0±1,0
SR 8040	80	50	40	35	M-14	600	8,0±1,0	80,0	8,0±1,0
SR 8055	80	50	55	35	M-14	500	11,0±1,5	70,0	11,0±1,5
SR 9540	95	50	40	42	M-16	1000	8,0±1,0	140,0	8,0±1,0
SR 9525	95	60	25	42	M-10	1500	5±1	80	5±1
SR 15075	150	50	75	50	M-20	1800	15,0±2,0	275,0	15,0±2,0



SR-N

Ref.	A	Dureza (Sh)	B	C	D	E	Compresión (Kgs.)	Flecha	Cizalla (Kgs.)	Flecha
SR 00-N	20	60	19	15	M-06	12	12	4,0±1,0	2,0	4,0±0,5
SR 0-N	40	50	28	25	M-10	20	40	5,5±1,0	7,0	5,5±1,0
SR 0-N M8	40	50	28	30	M-08	20	40	5,5±1,0	7,0	5,5±1,0
SR 1-N	57	50	44	20	M-08	24	70	8,5±1,0	10,0	8,5±1,0
SR 2-N	57	50	44	20	M-08	38	130	8,5±1,0	25,0	8,5±1,0
SR 4-N	60	50	60	25	M-10	48	150	10,0±1,0	20,0	12,0±1,5
SR 5-N	80	50	70	35	M-14	68	350	14,0±1,5	65,0	14,0±1,5
SR 6-N	95	50	76	42	M-16	76	450	15,0±2,0	75,0	15,0±2,0
SR 7-N	108	50	75	45	M-16	97	600	15,0±2,0	140,0	15,0±2,0
SR 8-N	130	50	85	45	M-16	117	900	17,0±2,0	185,0	17,0±2,0